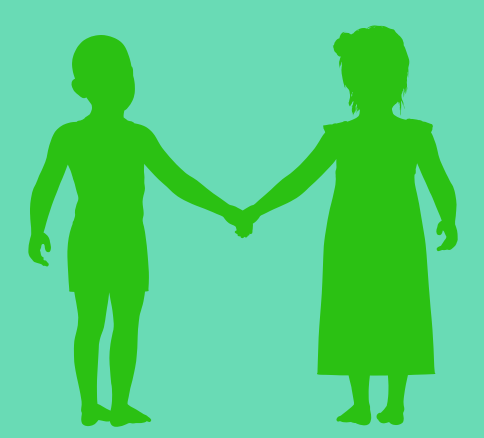


**\$25,000
DOLLARS**

Donated to
California Farm Bureau Federation
towards their lawsuit against the
California State Water Board's
Bay Delta Plan & SED Report

20,500



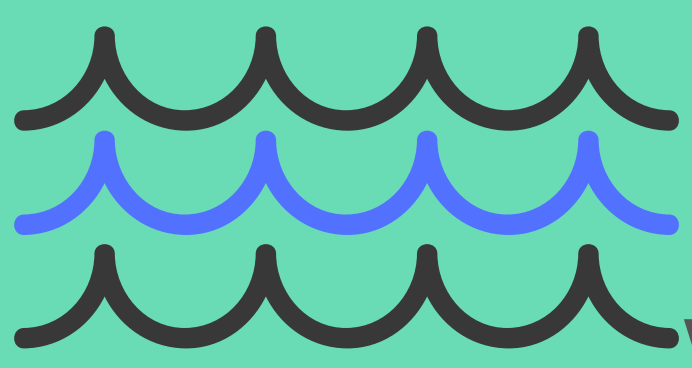
**MERCED COUNTY THIRD GRADERS
EDUCATED THROUGH FARM2U
SINCE OCTOBER 2012**

**MERCED COUNTY
FARM BUREAU**

2019 WORKING FOR YOU

Break down of MCFB Ag dues

Merced County Farm Bureau	\$170.00
California Farm Bureau Federation	\$105.00
American Farm Bureau Federation	\$4.00



**Out of 151 events,
meetings and
workshops attended,
40% involved water**



**88 SPECIFIC
FARM BUREAU
EVENTS HELD**

- Food Safety Modernization Act
 - Bay Delta Plan - Minimum Wage - Ag Overtime
 - Land Use - County Ordinances - Immigration
 - Sustainable Groundwater Management Act
 - Irrigated Lands Regulatory Program
- ISSUE
FOCUSED**

Meetings and workshops



51

**with elected officials and
staff members**

- High Speed Rail - Conservation Easements
- ELD Mandate - Farm Bill - Animal Welfare

\$16,000

**IN SCHOLARSHIPS AWARDED
TO HIGH SCHOOL SENIORS CONTINUING THEIR
EDUCATION IN AN AGRICULTURALLY
RELATED FIELD**

MCFB

CONNECT WITH US



WWW.MERCEDFARMBUREAU.ORG

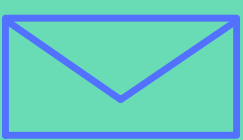


PHONE: (209)723-3001

FAX: (209)722-3841



646 S. HWY 59, MERCED, 95341



PO BOX 1232, MERCED, 95341



**MERCED_FARM_BUREAU
MERCED_COUNTY_YFR**



**MERCED COUNTY FARM BUREAU
MERCED COUNTY YOUNG FARMERS & RANCHERS**